

# Alaska Department of Fish and Game

Habitat Section  
Southeast Region



## Portage Bay Uncataloged Stream Tributary 1

## ADDITION

**Water body name:**

**Quad:** Petersburg D-4

**Upper Reach Latitude:** 56.914817 **Longitude:** -133.257896

**Lower Reach Latitude:** 56.915701 **Longitude:** -133.259251

**Findings:** We surveyed this uncataloged stream using baited minnow traps and a GPS and captured juvenile coho salmon. The stream channel flows through a muskeg and there is a head cut just below the culvert (Table 1; Figures 1–3).

**Recommendations:** Add this uncataloged stream to the anadromous waters catalog for rearing coho salmon (Figure 4).

**Nomination:** Pending

**Survey date:** 8/24/23

**Species & Lifestage:**

**Survey crew:** EK, NJ

Table 1.—Uncataloged stream tributary 1 survey data.

Waypoint	Latitude	Longitude	Notes	Stream Width ft	Stream Substrate	Habitat Features	Gradient %	Sample Effort	Sample Results
715	56.914821	-133.257915	MT at 1030 downstream. Too shallow for trap upstream. Stream has blue and white flagging indicating fish presence..	2-4	Small Gravel		1-2	MT	9 CO 5 DV



Figure 1.—Juvenile coho salmon captured at waypoint 715.





Figure 2.—Stream channel and culvert at waypoint 715.



Figure 3.—Culvert at waypoint 715.



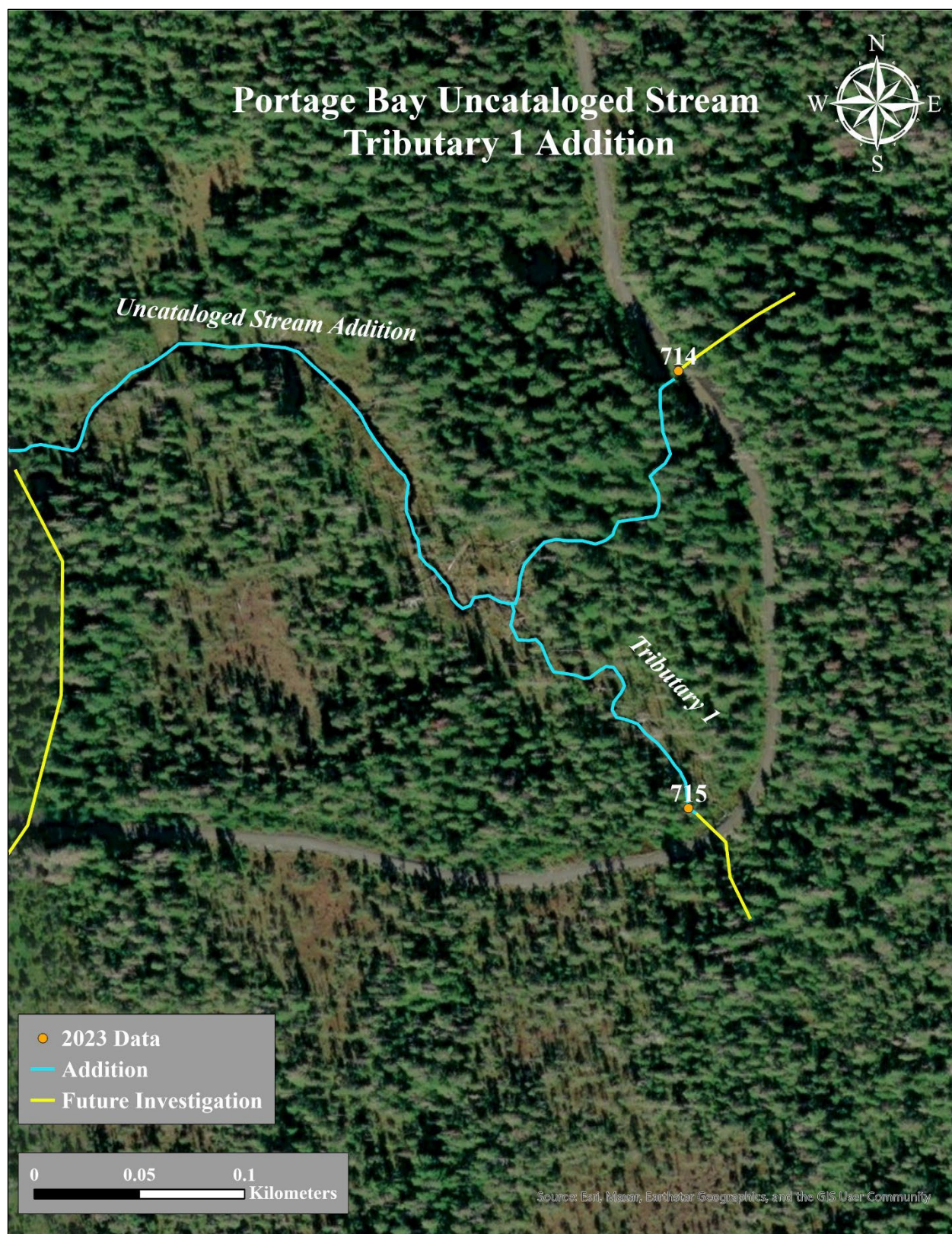


Figure 4.—Uncataloged stream tributary 1 addition map.